

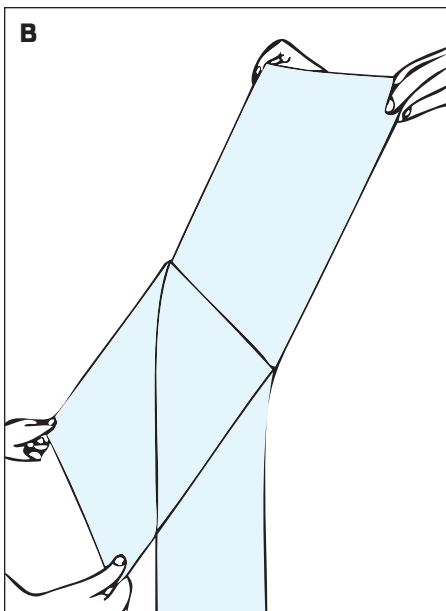
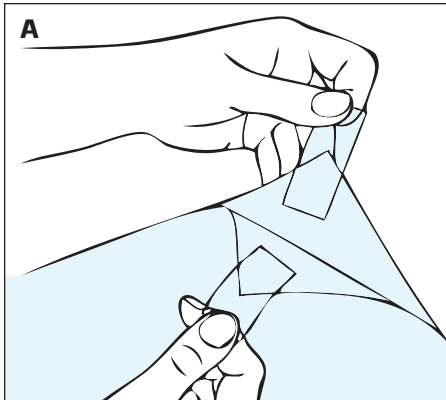
Decorative Window Film Installation Instructions

August 2011

Pressure Sensitive Adhesive System

Diagram A–F

- Release Liner Removal
- Film Application
- Film Trimming
- Final Squeegee



EQUIPMENT

- Application solution (in spray container, properly mixed)
- Squeegee
- Edge guide tool
- Trimming knife
- Pressure sensitive tape
- Razor scraper
- Paper towel (a lint free towel is best)

Lintec application solution and squeegees are highly recommended for proper installation

Lintec squeegees are softer and less likely to scratch film than standard squeegees.

A standard 32 ounce spray bottle full of warm distilled water mixed with 3 drops of dishwashing fluid can be used as application fluid in a pinch.

A complete Lintec installation kit including application solution is available by calling Lintec at the number on the bottom of the page.

Lintec application solution and squeegees can also be purchased separately.

1. COMPLETELY CLEAN WINDOW

- Place absorbent cloth on floor under the windows to collect excessive window solution.
- Wash window with solution and squeegee.
- Wet window with solution and scrape entire surface with razor scraper to remove any dirt particles.
- Wash and squeegee again.
- Wipe edges carefully with paper towel.
- Make sure that all loose dirt is removed.

Cleaning the window completely and thoroughly is the single most important step.

2. FILM PREPARATION

- Take the film out of the box. Remove end plugs and protective plastic sleeve. Save packaging to protect balance of film when job is completed. Replace end plates and place the roll back in the box. Set the box in front of window so that release liner which protects the adhesive faces installer. The film can then be unrolled directly from the box.
- Measure window glass from inside the frame.
- Film width should be pre-cut at least 10mm wider than window.
- Soak window thoroughly with solution.
- Pull enough film from the box to overlap the top and bottom of the window by approximately 25mm and cut.
- Have assistant hold cut film, or place film against solution soaked window with release liner facing the installer. The solution on a window will hold film in place (with SR coated polyester film do not use wet window to hold film).

Visit Our Web Site at www.digitalwindowgraphics.com for More Information



LINTEC OF AMERICA, INC.

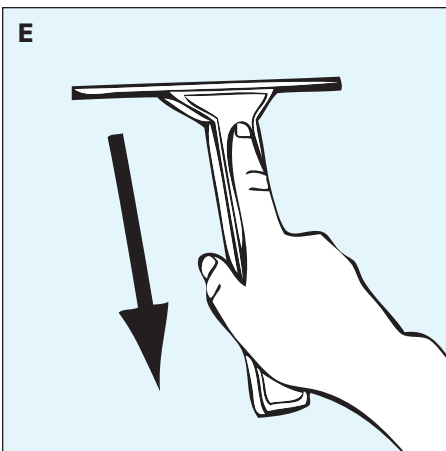
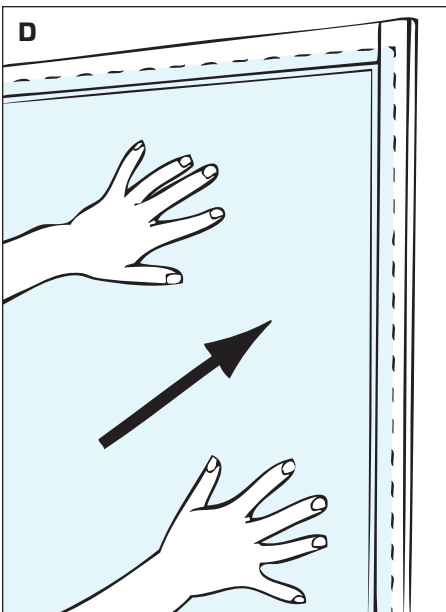
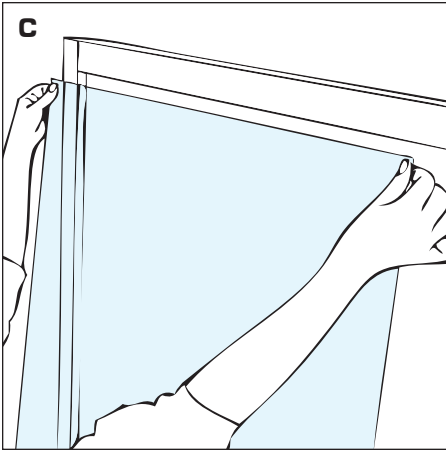
1292 Barclay Blvd.
Buffalo Grove, IL 60089

Tel: 847.229.0547
Fax: 847.229.0548

Toll free: 800.806.8977
www.lintecofamerica.com

Decorative Window Film Installation Instructions

August 2011



3. RELEASE LINER REMOVAL

The films are coated with pressure sensitive adhesive which must be kept clean. The adhesive is protected with a release liner and during application the release liner must be removed. Protect the film and exposed adhesive during the entire installation procedure. Do not let it touch anything but the glass on which it is to be installed.

- a. Apply pressure sensitive tape on one side of an upper corner of the film. Place a second piece of tape on same corner on the reverse side of film (see diagram A). Be careful not to let exposed tacky surfaces of the tape touch each other.
- b. Holding one piece of tape in each hand, pull the pieces of tape apart to separate the release liner from film.
- c. As you pull the liner off the film, begin to spray the adhesive surface with solution, completely soaking exposed adhesive. Continue pulling down on clear release sheet while spraying solution on adhesive. Solution will neutralize adhesive, preventing it from sticking to anything. Once initial removal of liner begins, try to pull it down evenly across the film (see diagram B). Discard release liner safely if using a scratch resistant WINCOS film. If not keep release liner for use as a mask during squeegee process.
- d. With adhesive surface completely exposed, spray one final time with solution to insure that 100 percent of adhesive is wet.

4. FILM APPLICATION

- a. Hold film at uppermost corners being careful not to allow film to touch floor or any other surface, place film on window with adhesive side against glass (see diagram C).
- b. The application solution acts as a lubricant making the window surface slippery. You can now slide the film so that one edge of film is 1–2mm from one side of window(see diagram D). Lift film if necessary to remove large wrinkles or bubbles. (For ease of installation the edge you select should be the one you favor, i.e. right side for right-handed people, left side for left-handed people. If fitted correctly this edge will not have to be trimmed. Other edges of the film should overlap top, bottom, and opposite edge of window.)
- c. Spray the surface side of the film facing you with solution. This acts as a lubricant for the squeegee. See note below for UV Printed window films.
- d. Beginning at the center of window, squeegee once to right side of window (see diagram E). Going back to the center, squeegee across to left hand edge of the window, then squeegee the window in straight, smooth strokes working from center out to the edges of the window until all excess application solution has been squeegeed out from under the film and film is lying flat. Note: the squeegee will not float across a dry surface, so re-lubricate with application solution as needed.

Please be aware that film can be scratched if a hard squeegee is used. Lintec scratch resistant film is highly recommended to prevent scratches in clear non image areas. If not using a scratch resistant version of WINCOS please use the release liner as a mask during the squeegee process.

Visit Our Web Site at www.digitalwindowgraphics.com for More Information



LINTEC OF AMERICA, INC.

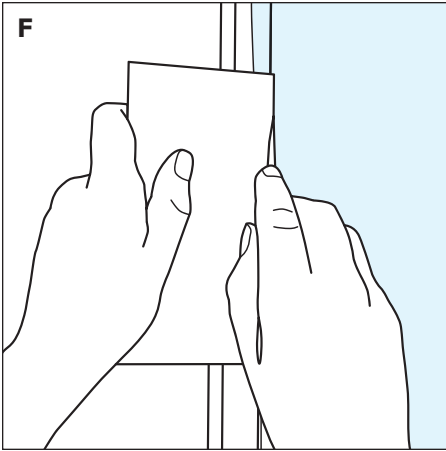
1292 Barclay Blvd.
Buffalo Grove, IL 60089

Tel: 847.229.0547
Fax: 847.229.0548

Toll free: 800.806.8977
www.lintecofamerica.com

Decorative Window Film Installation Instructions

August 2011

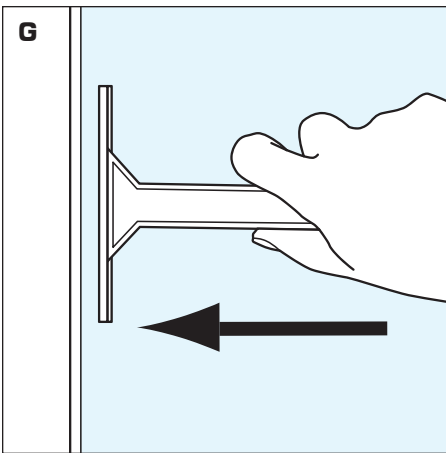


5. FILM TRIMMING

- a. Butt the edge guide tool against window frame, perpendicular to glass (see diagram F).
- b. With trimming knife and new sharp blade, trim excess film using edge guide tool to provide a narrow straight line border. Trim the bottom and side before top, so that trimmed film will not get in your way.
- c. Start trimming operation from corner but do not finish cutting into corner.
- d. Remove and discard all film scraps.

6. FINAL SQUEEGEE

- a. Once film is completely trimmed, spray the surface once more with application solution. Repeat squeegee operation as described in Step 4-d (see diagram G). Finally, using a wad of paper towels, gently wipe around edges of film to completely remove all excess water. This prevents the application solution from re-entering between the glass and film. Note on WINCOS UV printed films, many UV curable inks are not entirely water resistant. All that were tested by Lintec can be applied via wet solution, however, some added care is necessary. When applying the application solution on the film surface squeegee within 2 minutes. A soft squeegee is necessary to prevent smudging of the ink and scratching of film. A piece of the release liner can be used as a mask over the film when applying the film to glass to prevent scratching of film and ink. Lintec scratch resistant films are highly recommended to prevent scratching of clear non imaged areas during installation.



7. CLEANING & MAINTENANCE

- a. The film can be cleaned periodically using a soap and water solution. We recommend wetting a soft cloth with solution and then cleaning the window rather than directly spraying solution on the surface. **Never use harsh chemicals or cleaning agents such as Windex to clean the film surface.** The chemicals used in many window cleaning agents can attack the film's adhesive causing delamination from the window.

Visit Our Web Site at www.digitalwindowgraphics.com for More Information



LINTEC OF AMERICA, INC.

1292 Barclay Blvd.
Buffalo Grove, IL 60089

Tel: 847.229.0547
Fax: 847.229.0548

Toll free: 800.806.8977
www.lintecofamerica.com